



**World Wide
Technology**

• CASE STUDY

World Wide Technology (WWT) & TuMeke



Company Name

World Wide Technology

Company Size

10,000+ Employees

Industry

Technology Services & Consulting

Learn More

wwt.com

Executive Summary

Key Takeaways

- 01 The partnership with TuMeke has been instrumental in bridging the gap between ergonomic plans and their practical application.
- 02 Enhanced communication across organizational levels has been a crucial outcome, facilitating better understanding and collaboration.
- 03 Objective data from TuMeke supports effective decision-making and safety improvements.
- 04 The TuMeke's scalability and adaptability make it an invaluable asset for growing companies like WWT.

Introduction

World Wide Technology (WWT) is a logistics and integration provider in the tech industry, operating in the dynamic field of logistics and supply chain management. The company offers network planning, design, equipment aggregation and staging, hardware configuration, software imaging, asset tagging, auditing, implementation, training, consulting, leasing, and management services.



Mark Paulson, a Safety Specialist at WWT

and a certified ergonomic assessment specialist, is responsible for all the ergonomic assessments, injury management related to ergonomic issues, and serves as the liaison for the employee safety committees across all areas of their supply chain. His main challenge was bridging the gap between ergonomic plans and their practical application on the floor.



Challenges

Like many companies, WWT faces distinct ergonomic challenges that impact both employee well-being and operational efficiency.

One of the primary challenges WWT faces involves lifting heavy items. Employees frequently handle items weighing over 50 pounds, with some exceeding 100 pounds, necessitating the involvement of multiple individuals to lift them safely. This often results in a high incidence of lifting-related injuries, which in turn affects overall productivity and increases the risk of workers' compensation claims.

Additionally, employees often maintain awkward postures while performing their tasks. These tasks, especially those involving lab work and equipment testing, require frequent bending, reaching, and working overhead. Such postures can lead to musculoskeletal disorders and other health issues, resulting in increased absenteeism and reduced efficiency.

Another area of opportunity lies in bridging the communication gap between ergonomic plans and their practical implementation on the floor. Ensuring that safety protocols are consistently understood and followed by all employees is crucial. Addressing this gap can prevent inconsistent practices, reduce injury rates, and help maintain a strong culture of safety.

Training and education is another focus for WWT. Providing continuous training on ergonomic practices to new and existing employees requires significant effort. Without adequate training, employees are more likely to engage in unsafe practices, increasing the risk of injury. Additionally, ensuring that employees have access to the right resources, tools, and equipment for their tasks is essential for maintaining ergonomic safety. Lack of appropriate tools or equipment can lead to improper handling of tasks, thereby increasing the risk of injuries.

Discovering TuMeke

WWT was looking for a solution that could efficiently complete ergonomic assessments and provide real-time feedback to employees and leadership about risks. After evaluating various options, including wearables, WWT chose TuMeke for its powerful computer vision, ease of use, and comprehensive assessment capabilities.



Solutions

The implementation of TuMeke was smooth and easy, and it allowed Mark to support nearly 3,000 employees on-site. The tool's versatility enabled both employee posture assessments and overall process risk assessments. Mark highlighted the excellent partnership with TuMeke, citing their knowledgeable support team and responsiveness to feedback.

ROI and Impact

For every 100 assessments performed, WWT saved approximately 83 hours, translating to a 42% decrease in ergonomic-related injuries across the organization within eight months. This efficiency was crucial for Mark, allowing him to complete 12 times more assessments than before.

42%



Decrease in ergonomic-related injuries

A comprehensive global ergonomics safety plan has been established at WWT, including regular updates and support for its application across all levels of the organization. This ensures a standardized approach to ergonomic safety, reducing inconsistencies and improving overall safety compliance.

WWT has fostered a collaborative approach to safety, engaging employees in discussions about ergonomic risks and solutions. Employees are encouraged to share their insights and feedback, making them active participants in safety initiatives. This approach has strengthened the safety culture, making it a shared responsibility among all employees, from warehouse associates to senior leadership.



After implementing TuMeke, WWT observed significant improvements in employee baseline scores on the REBA, RULA, and NIOSH assessments, with reductions from "very high" to "moderate" within six weeks in some departments. The ROI tool within TuMeke justified the need for mechanical equipment in various areas, enhancing safety and reducing injury risks.

Example A:

Here's a comparison of the task performed without lifting equipment versus with the purchased lifting equipment, showing a reduction in musculoskeletal injury risk from 9 to 2, representing a **78% decrease.**

Before

NAIC3 L4 Single Lift 1RU from pallet to table



Posture Score

Posture A

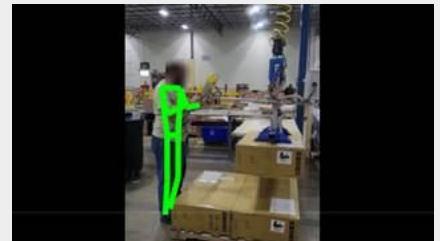
MSD Risk

High

9

After

NAIC3 L4 Single Lift 1RU with lifting assistance



Posture Score

Posture A

MSD Risk

Low

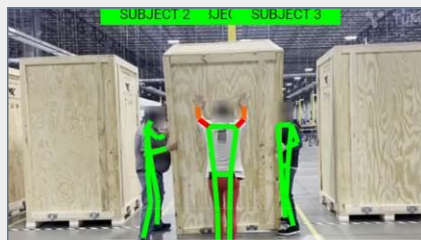
2

Example B:

Here's an example of a method improvement and purchase of new equipment for a task, showing a reduction in musculoskeletal injury risk from 9 to 4, representing a **55% decrease.**

Before

IBMOR Crating



Posture Score

Posture A

MSD Risk

High

9

After

IBMOR Crating (rollers)



Posture Score

Posture A

MSD Risk

Medium

4



Additionally, the use of TuMeke's ROI calculator enabled WWT to justify a \$34,000 investment in equipment to help lift an exterior cabinet. This investment showed the potential for a 70% reduction in back strain injuries, with 187% of the original investment recouped in one year and 561% recouped over the next three years. This compelling data secured senior leadership's approval. This objective approach fostered a collaborative safety culture and encouraged friendly competition among teams to further reduce risk scores.

83 Hrs



Saved in assessment time

WWT realized substantial ROI through reduced injuries and improved safety metrics. The financial impact included significant cost savings from fewer workers' compensation claims and enhanced productivity due to safer working conditions. WWT plans to expand the use of TuMeke to other integration and logistics centers as the company grows. The tool will continue to play a pivotal role in the company's safety initiatives and ergonomics management.

Continued Partnership

Implementing TuMeke at WWT has been a transformative experience, characterized by improved safety, reduced costs, and enhanced operational efficiency. Mark's collaboration with TuMeke has elevated his professional profile, showcasing his role as a thought leader in safety innovations.

Conclusion

By leveraging TuMeke, WWT has successfully addressed its ergonomic challenges, fostering a safer and more productive work environment. The collaboration between WWT and TuMeke exemplifies how technology can drive meaningful improvements in workplace safety and operational performance.



At TuMeke, we are on a mission to eliminate workplace musculoskeletal injuries.

Our innovative solution blends cutting-edge technology with a user-friendly experience to help you **identify and mitigate ergonomic risk faster** while **maximizing efficiency and ROI**.

To learn more, visit tumeke.io.

Contact Us

Email

support@tumeke.io

Phone

(415) 349-5121

Thank You